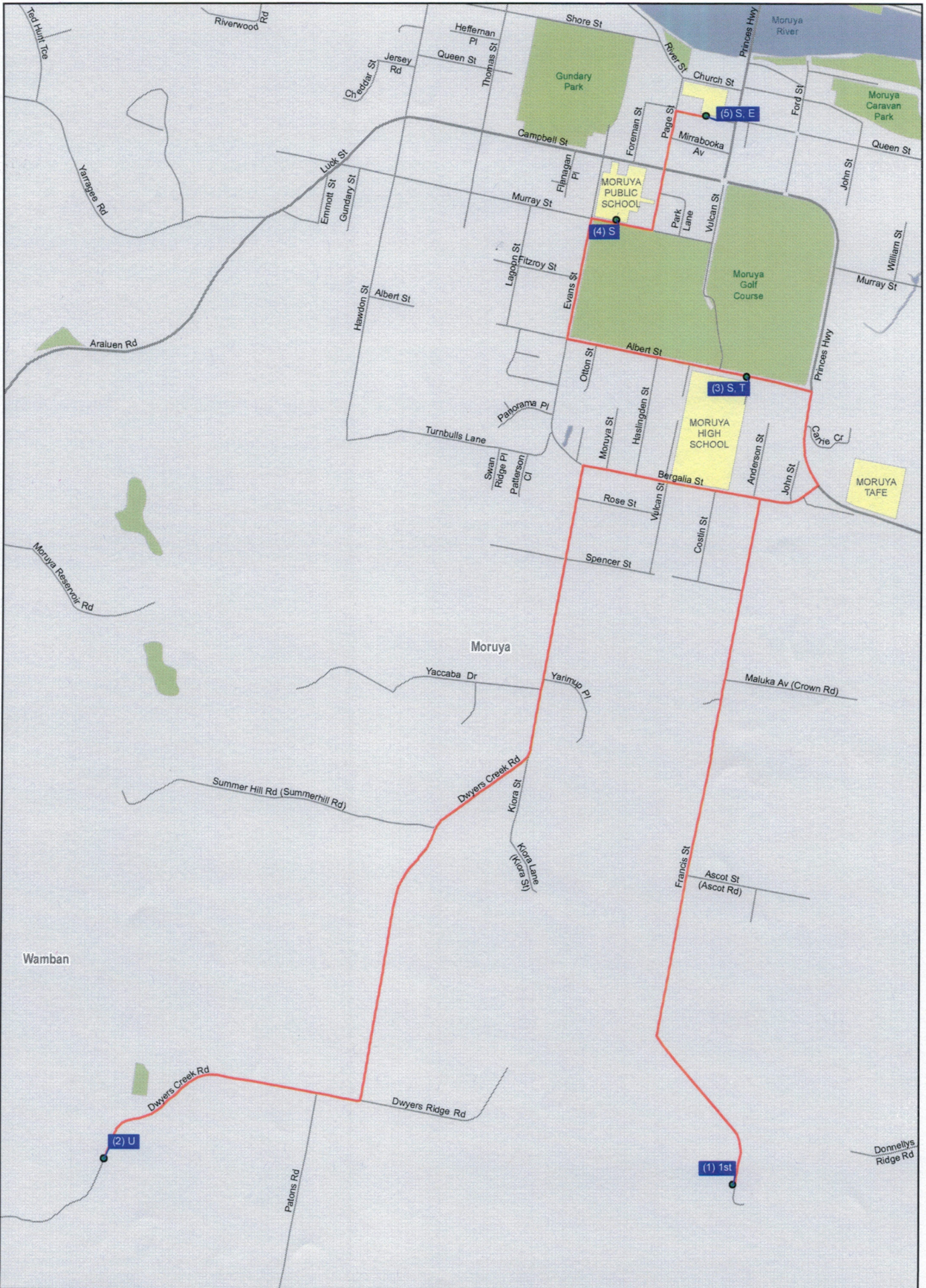
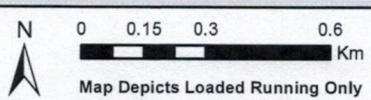


Schedule 2 Service Map - N1221 AM1 - Moruya-Dwyers Creek Road

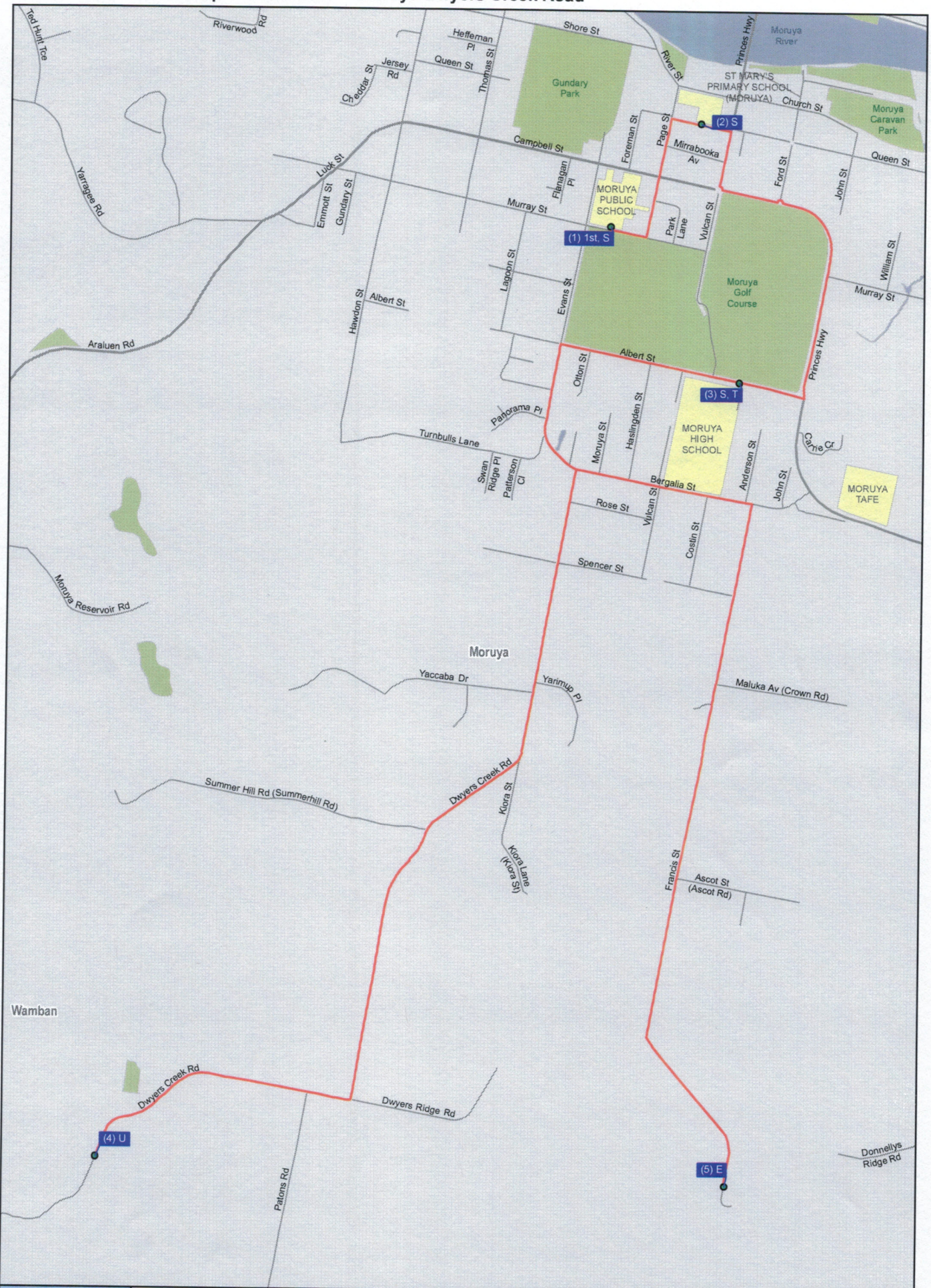


N1221 AM1
 Total Distance: 13.8 km
 Effective Date: 21/11/2017

(1)	Stop Order	T	Transfer	Bus	Depot
1st	1st Pickup	U	Turnaround	School	School
E	Last Stop	S	School	Red Line	Contract B Service Region



Schedule 2 Service Map - N1221 PM1 - Moruya-Dwyers Creek Road



N1221 PM1
 Total Distance: 14.0 km
 Effective Date: 21/11/2017

- | | | |
|----------------|--------------|---------------------------|
| (1) Stop Order | T Transfer | Depot |
| 1st 1st Pickup | U Turnaround | School |
| E Last Stop | S School | Contract B Service Region |

